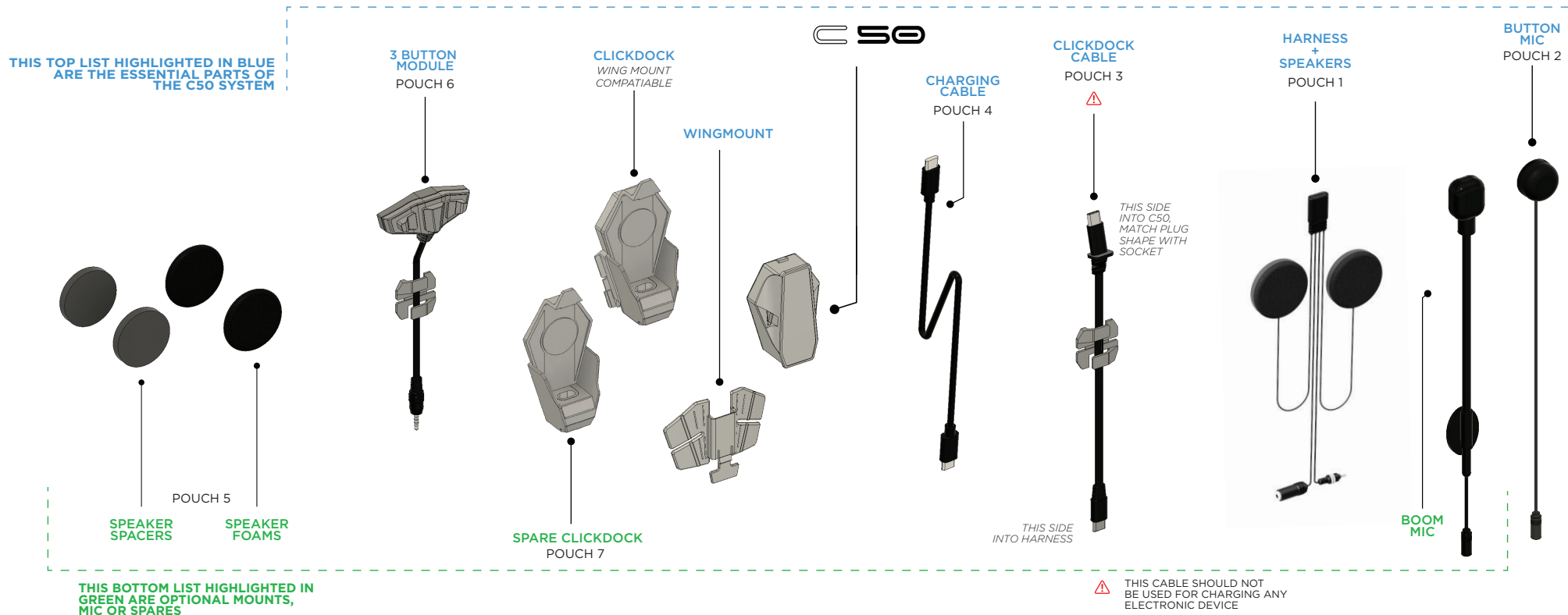




## WHAT'S IN THE BOX



### KEY THINGS TO KNOW ABOUT YOUR C50

1. C50 box has a number of spares that you might need later. Keep them in a safe place.
2. THE USB-C to USB-C CLICKDOCK CABLE is a custom C50 cable and should NOT be used for charging the C50 or any other electronic device.
3. The speaker must be positioned in the helmet to line up with your ear canal for optimum audio experience
4. C50 auto-adjusts for your phone's audio level when the app connects for the first time (one-time calibration). Music might distort at max volume if the app is not installed.
5. MUSIC SHARING requires a one-time app set up.
6. RIDEGRID 2.0 features such as MUSIC SHARING and GROUP CONTROLS work only with PRIVATE GROUPS.

### INSTALL THE APP TO ACCESS ALL FEATURES



### NEED HELP?



WHATSAPP  
**+91 96067 18202**



TOLL FREE  
**+91 95387 25827**

TURN SHEET FOR INSTRUCTIONS

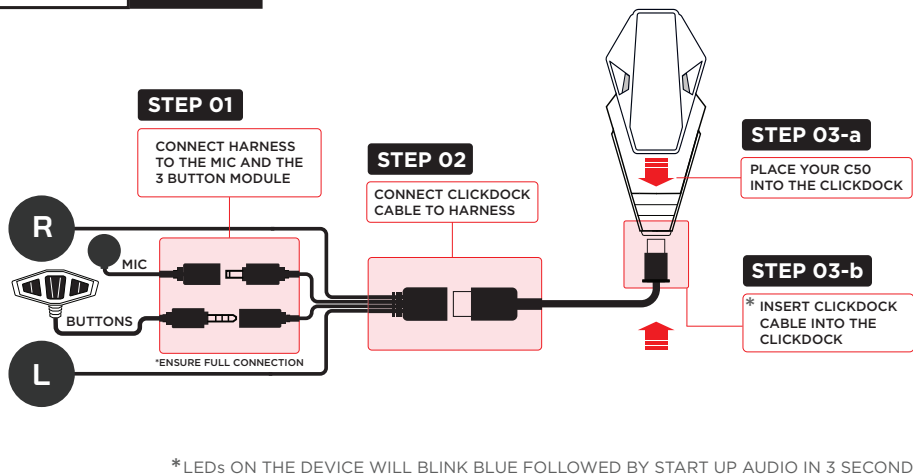




FOLLOW THE STEPS BELOW TO TEST YOUR **C50** BEFORE USE

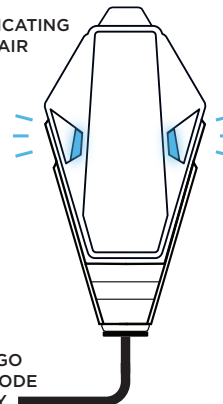
PAIRING YOUR **C50** TO YOUR PHONE VIA BLUETOOTH

## STAGE 01 SETTING UP



## STAGE 02 PAIRING

THE LEDS WILL BLINK BLUE INDICATING IT'S READY TO PAIR



THE UNIT WILL GO INTO PAIRING MODE AUTOMATICALLY



YOUR UNIQUE C50 DEVICE NAME WILL BE LISTED IN THE BLUETOOTH PAIRING LIST IN YOUR PHONE

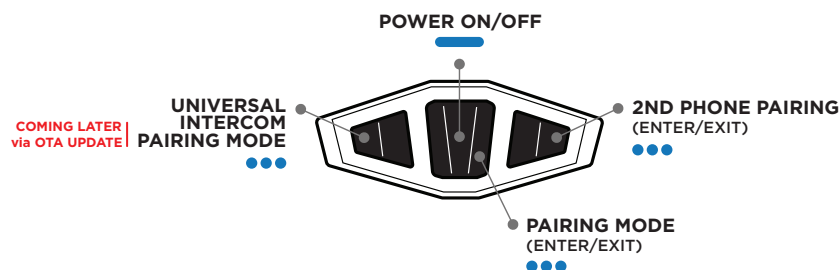
WATCH VIDEO FOR INSTALLATION STEPS



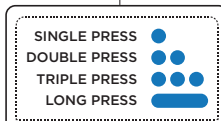
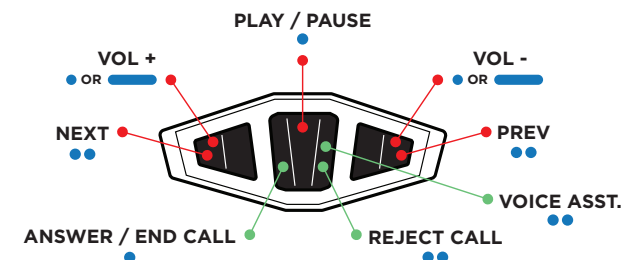
SCAN FOR THE INSTALLATION VIDEO

## 3 BUTTON MODULE - BUTTON ACTIONS

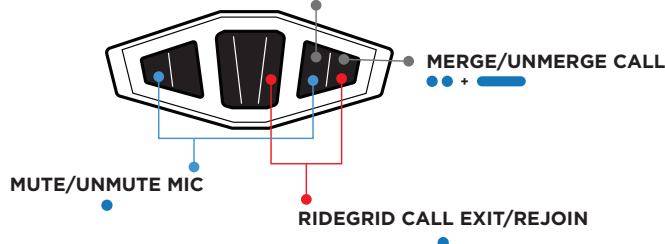
### POWER / PAIRING



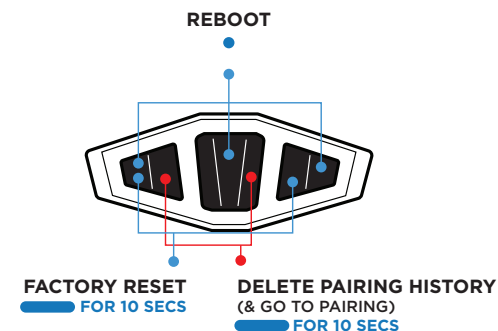
### MUSIC & PHONE



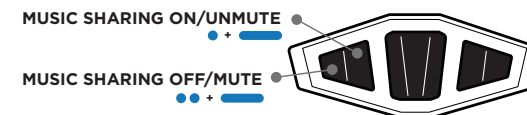
**RIDEGRID ON/OFF**



### RESET / REBOOT



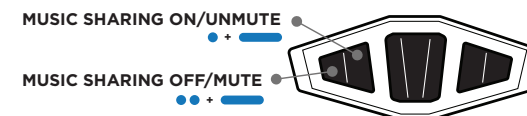
### BUDDY CONNECT MUSIC SHARING ( 1-TO-1 )



\*Music sharing requires app setup for initial enable/disable.

NOTE - EITHER USER CAN TURN OFF/ON MUSIC SHARING

### MESH MUSIC SHARING ( GROUP )



\*ON/OFF is for the user streaming the music.  
Mute/Unmute is for the listeners

\*Music sharing requires app setup for initial enable/disable. NOTE - USER WHO IS STREAMING IS SELECTED USING THE APP