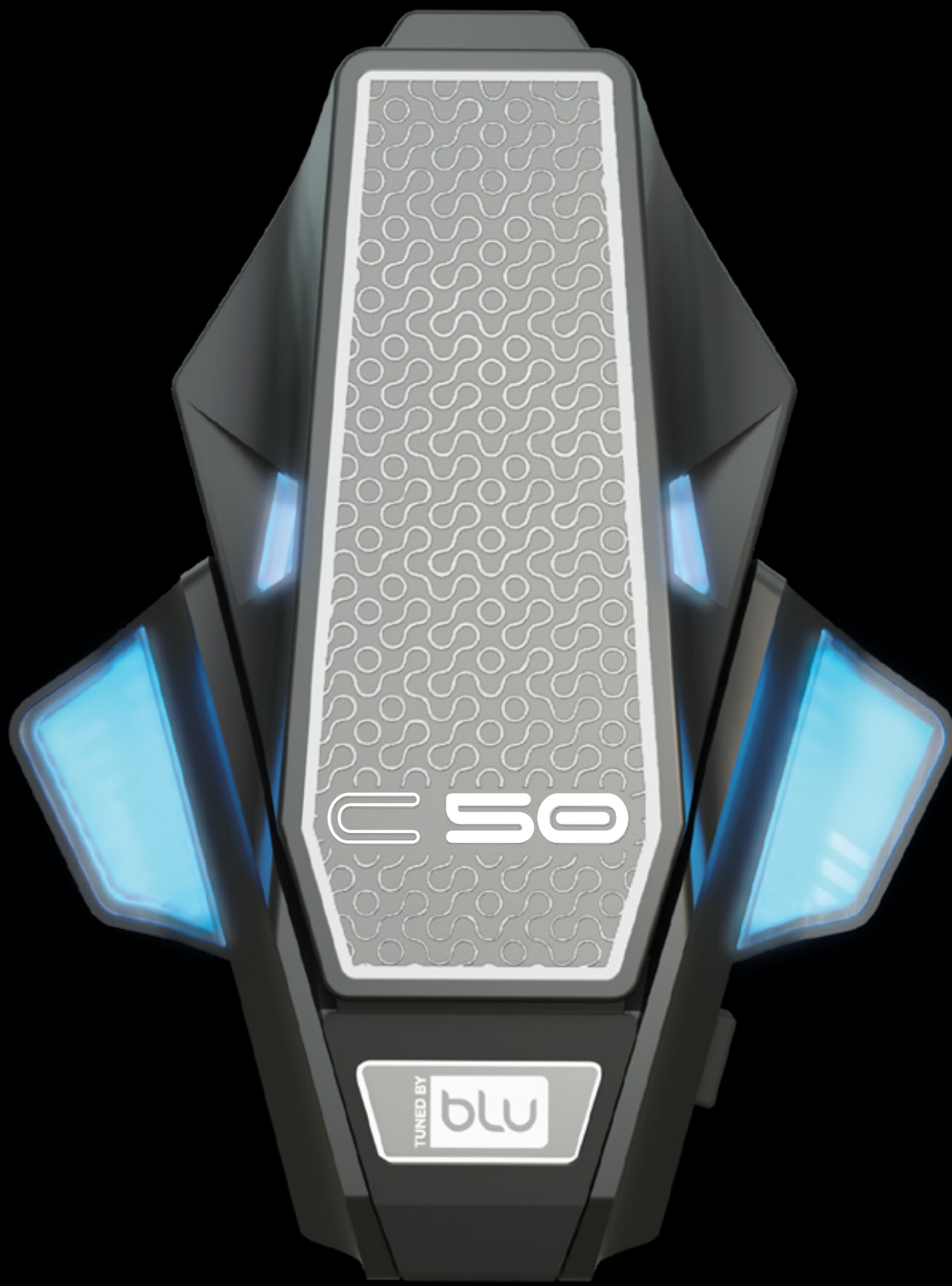


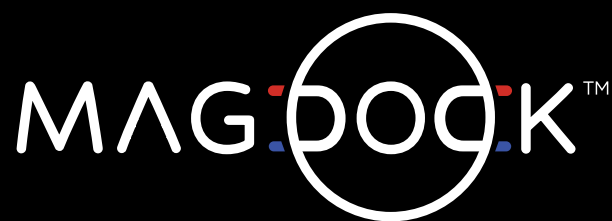


I N T R O D U C I N G



C50 PRO

RIDE . CONNECT . BOND



THE NEXT ERA IN MOTORCYCLE COMMUNICATION TECHNOLOGY

At BluArmor, innovation and value are at the heart of everything we do, and the all-new C50Pro exemplifies our commitment to pushing boundaries across all segments. This next-generation helmet communication system redefines excellence, showcasing BluArmor's latest technologies in a sleek, world-class package. Building on the proven success of the C30, the C50Pro seamlessly combines customer needs and desires, addressing every challenge of its predecessor—from design and form factor to usability—while setting a new benchmark in performance and style. The C50Pro is more than just an upgrade; it's a bold leap forward, making it our true flagship product.



C50 PRO

RIDE . CONNECT . BOND



WATERPROOF

ALL WEATHER
READY



SIGNATURE
HARDWARE

WORLD CLASS
AUDIO SPECIFICALLY
BUILT FOR RIDERS



**HD VOICE
& AUDIO**



360° APP
FOR
COMPLETE
CONTROL



**>16H BATTERY
LIFE**



RIDE GRID 2.0™
ADVANCED MESH INTERCOM



MUSIC SHARING
OVER MESH



ALT
ACTIVE LINK TRACKING



MESH + PHONE
MERGING



1.2 Km
LOS
RANGE
(LINE OF SIGHT)



DECELERATION
AUTO ALERT



HAZARD
LIGHTING



CUSTOM LIGHTING
PRESETS

WIRELESS
TSTICK



EASY CONTROL

FLEXIBLE
POSITIONING
& ORIENTATION



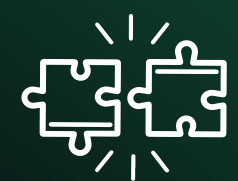
20
GROUP
CONTROL
FEATURES

eRIDE GRID
MESH OVER CLOUD

AUTO SWITCHING
RANGE **EXTENDER**



CRASH
DETECTION



UNIVERSAL
INTERCOM

2 yr
WARRANTY

PORTWEAVE™
MULTI POINT CONNECTIVITY



2ND PHONE



ACTION CAM



CLUSTER



GPS



RADAR



AUDIOWEAVE™



OVER-THE-AIR
FIRMWARE UPDATES

MAGDOCK™

MAGNETIC DOCKING

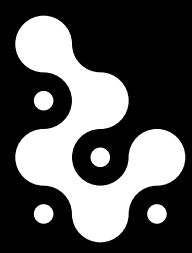
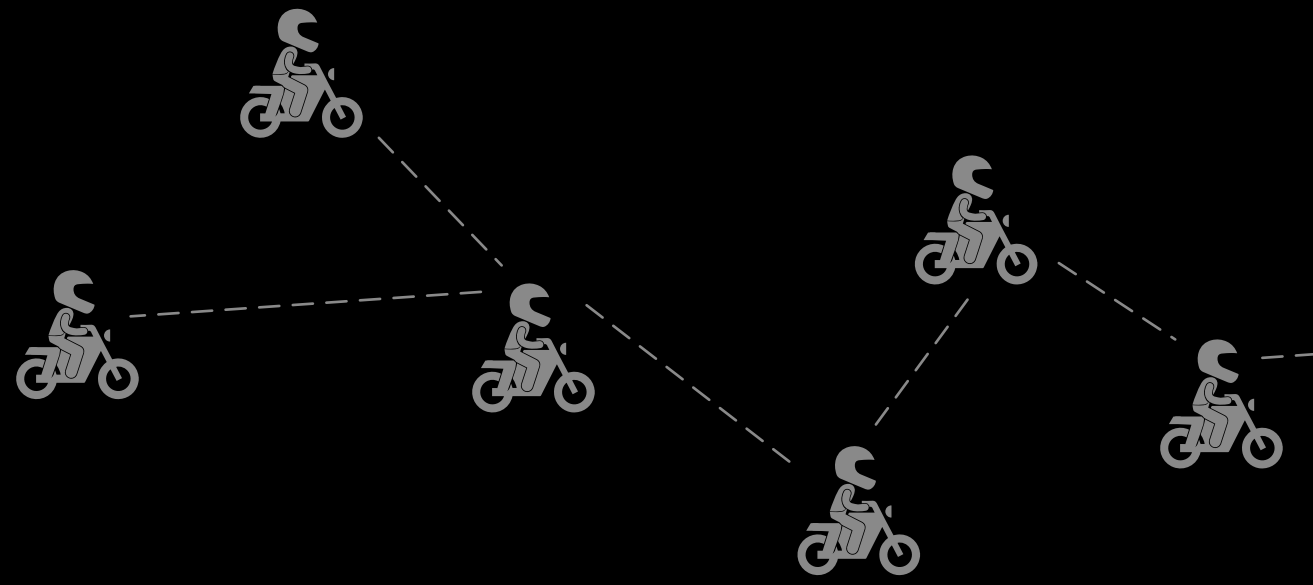
AUTO POWER ON

**CABLE-LESS
DOCKING**

**MAGNETIC
CHARGING TYPE C
ADAPTER**



2 LEVELS OF
**WIND NOISE
FILTER**
FOR CLEAR
VOICE



RIDE GRID 2.0™

ADVANCED MESH INTERCOM

RIDEGRID™ 2.0, our advanced mesh intercom, utilises hardware that is an order of magnitude more powerful than RIDEGRID™ 1.0. RIDEGRID™ 2.0 offers true HD voice clarity through wide-band speech. In addition, the reliability of the mesh is vastly improved with continuous background monitoring and adjustment of link strength using ALT™ (Active Link Tracking) technology.

Range anxiety becomes a thing of the past with BluArmor's eRIDEGRID™, a cloud intercom technology that is tightly integrated with RIDEGRID™ to ensure that the connection automatically switches between these techs based on signal suitability.

RIDEGRID™ 2.0, supports music sharing with the entire group over the mesh, making it the first intercom in the world to offer such a feature. In the special case of just two riders (BuddyConnect), C50Pro supports high-fidelity music sharing with music controls available to either rider.

C50Pro supports both RIDEGRID™ 2.0, and RIDEGRID™ 1.0. Riders who part of a group that has both the C50Pro and the C30 will need to set their C50Pro in RIDEGRID™ 1.0-mode for seamless communication with the C30. In this mode, none of the advanced mesh features will be available.

ALT
ACTIVE LINK TRACKING

eRIDE GRID
MESH OVER CLOUD

MUSIC SHARING
OVER MESH

HIGH FIDELITY
CONTROLS FOR BOTH RIDERS
2 RIDERS

WORLD'S FIRST
SHARE MUSIC WITH ALL
ALL RIDERS

1.2 Km
LOS
RANGE
(LINE OF SIGHT)

MESH + PHONE
MERGING

GROUP
CONTROL
FEATURES

CAPTAIN - SWEEPER
HOTLINE

CAPTAIN ONLY

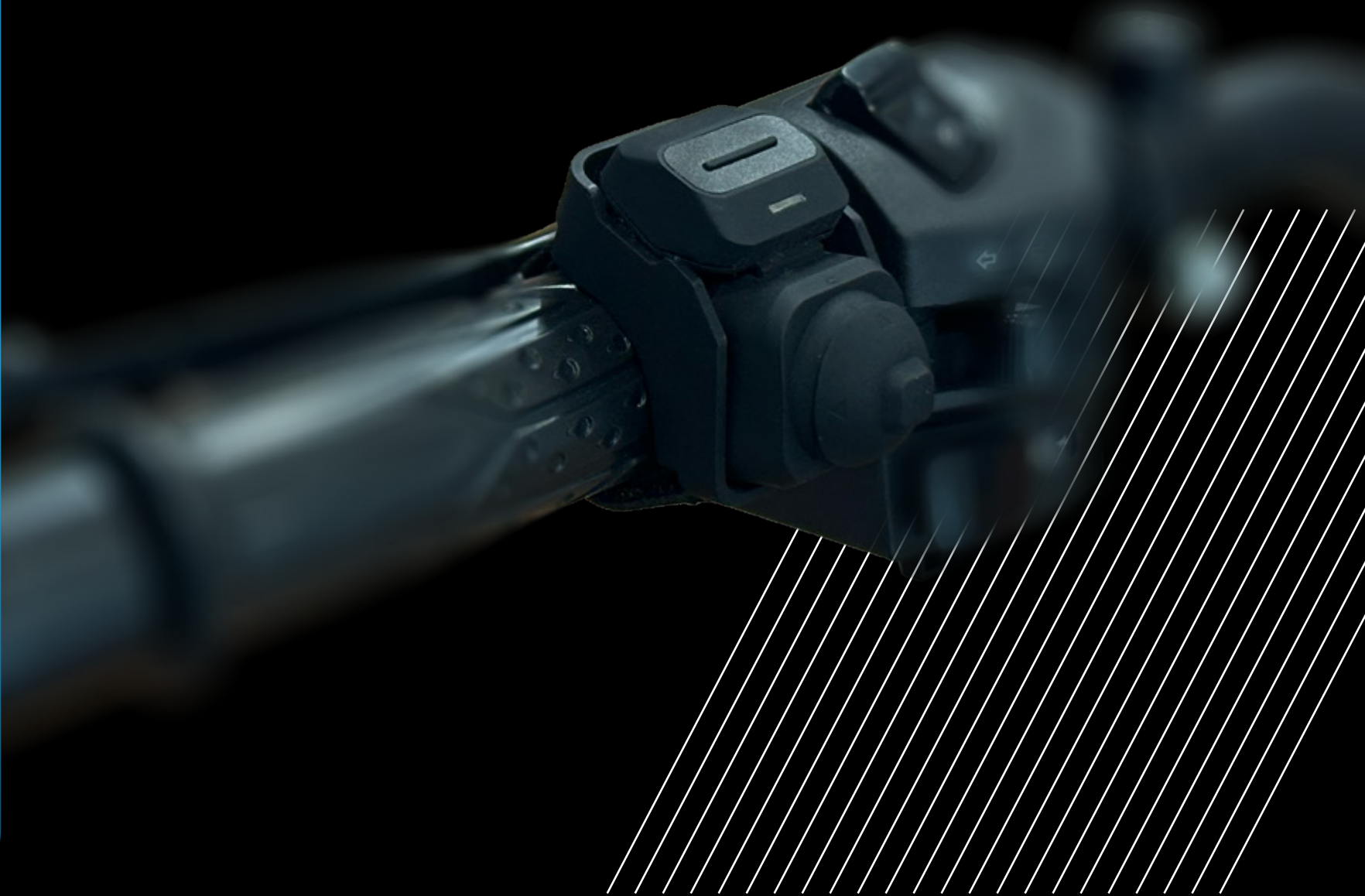


WIRELESS TSTICK

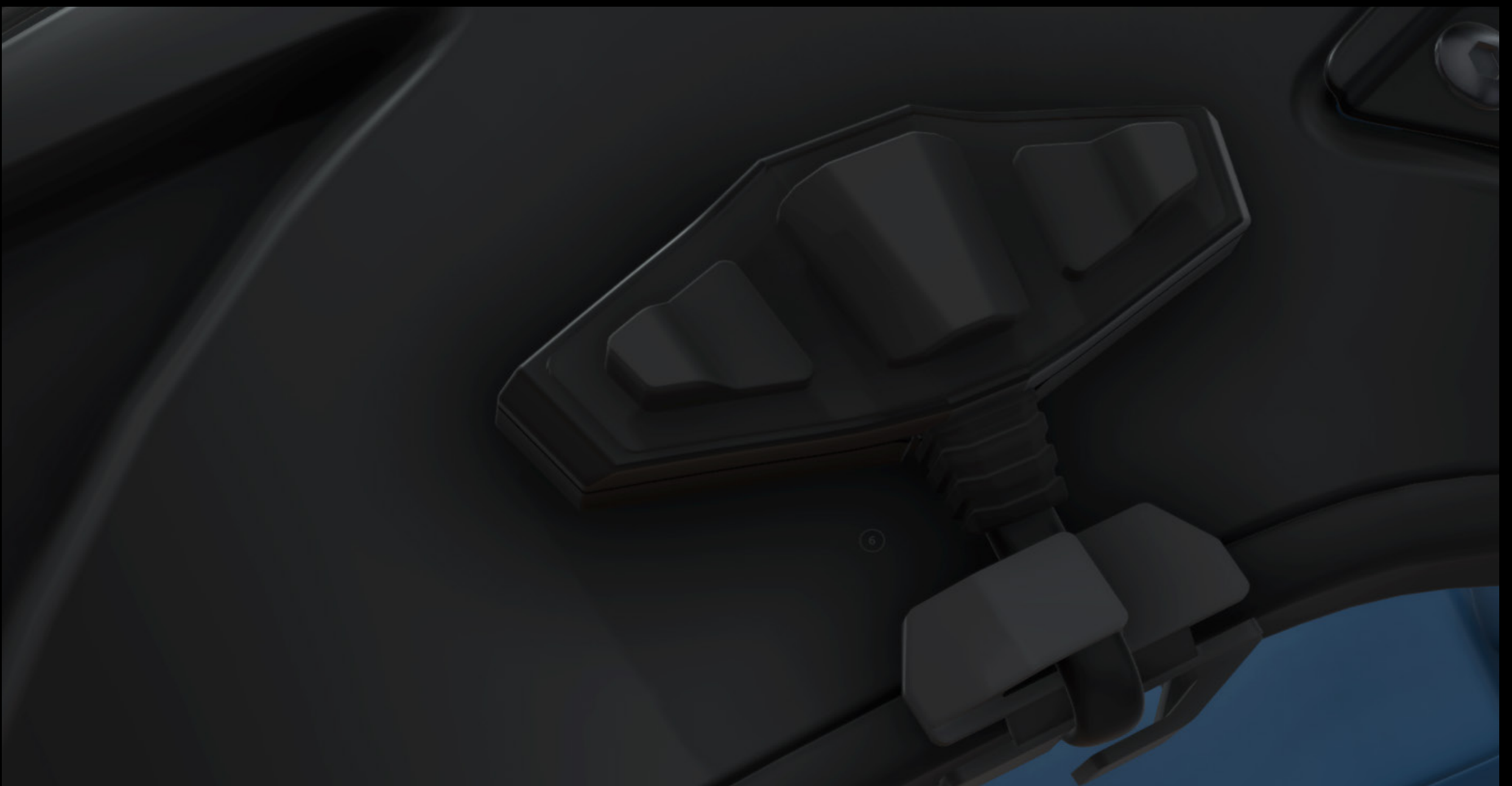


EASY CONTROL

FLEXIBLE
POSITIONING
& ORIENTATION



The C50Pro also debuts the Wireless TStick™, a wireless remote for the C50Pro. This versatile joystick can be mounted anywhere—from the motorcycle handlebar to your tank bag—giving riders unprecedented control at their fingertips. The Wireless TStick offers flexibility in both mounting, and in placement orientation.



In addition to the wireless TStick, the C50Pro also supports the conventional wired button, with a 3-button wired interface available for riders. The 3-button interface, is detachable, and can be attached to the side of the helmet at a position similar to the conventional intercoms.



WORLD CLASS
AUDIO SPECIFICALLY
BUILT FOR RIDERS

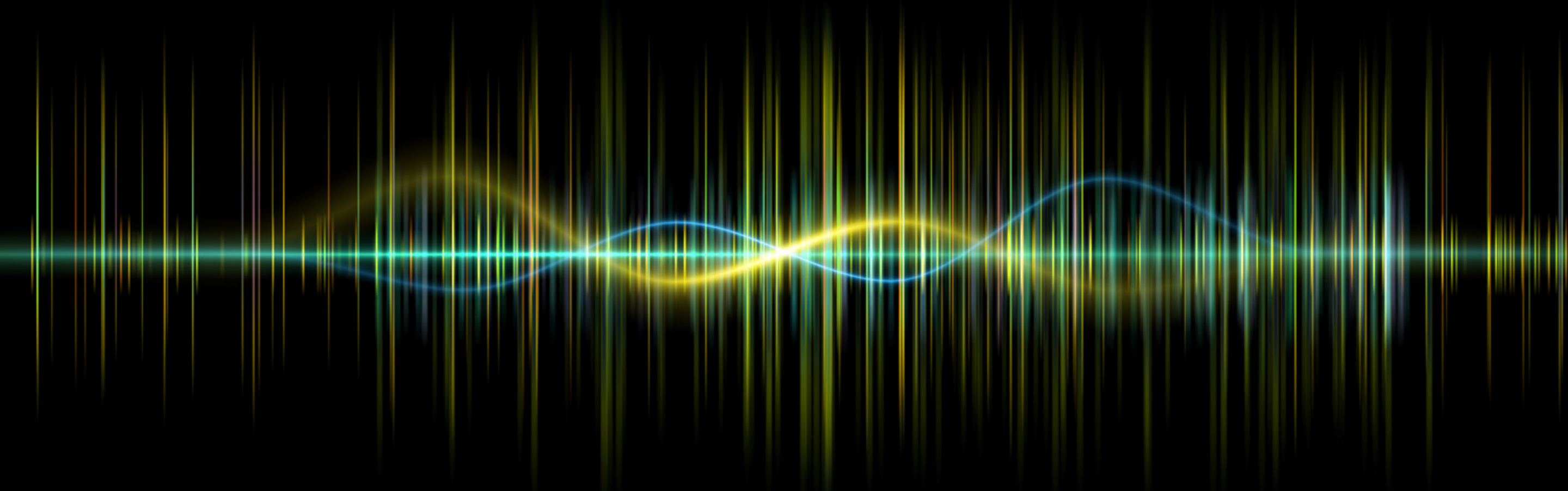


**HD VOICE
& AUDIO**

S I G N A T U R E
H A R D W A R E



An end-to-end curate-the-hardware approach that delivers superior HD sound quality with the C50Pro. Powered by an all-new two-level noise-suppression engine, the C50Pro offers a fantastic audio and voice experience.

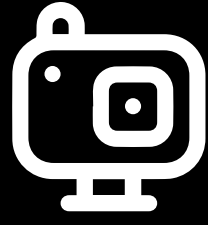


PORTWEAVE™

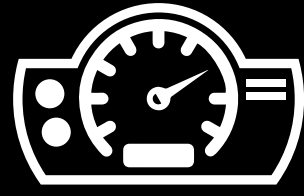
MULTI POINT CONNECTIVITY



2ND PHONE



ACTION CAM



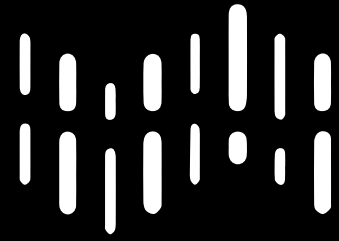
CLUSTER



GPS



RADAR



AUDIO MIX CONTROL

PORTWEAVE™ lets users connect their C50Pro to many different classes of devices through its primary and secondary connection. Riders can now select from an array of possible devices - phones, 2W clusters, action cameras, GPS devices, and devices that support universal intercom - for their primary and secondary connections.

MAG DOCK



A major innovation is the unique MagDock™ system, which allows for effortless mounting of the C50Pro without the hassle of cables. Simply snap the unit onto the helmet, and the C50Pro is instantly ready to go. Mounted at the back of the helmet, the dock ensures that aerodynamics remain uncompromised, delivering outstanding performance without sacrificing style or safety while continuing to be IP67-rated, making it all-weatherproof.



WATERPROOF
ALL WEATHER
READY

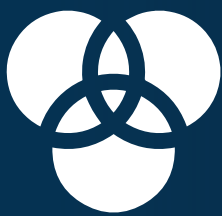
RIDE AURA



DECELERATION
AUTO ALERT



HAZARD
LIGHTING



CUSTOM LIGHTING
PRESETS

RIDEAURA™, an LED visibility technology that is both a safety feature and a stylish touch to your helmet. At BluArmor, we strongly believe that rider visibility is a great safety booster. RIDEAURA™ integrates an IMU-based deceleration-detection engine that detects the rider is slowing down and illuminates the brake-light pattern on the C50Pro. Riders can also activate an aircraft-like hazard-lighting pattern that alerts any other vehicles on the road to the rider's presence.



CRASH DETECTION

The C50Pro offers a crash-detection feature through an IMU-based motion-sensing engine. On detecting a crash, an SOS alert (either in the form of an SMS or a phone call) will be sent to the rider's emergency contact.



>16H BATTERY
LIFE



OVER-THE-AIR
FIRMWARE UPDATES

2 yr
WARRANTY



available on www.TheBluArmor.com