

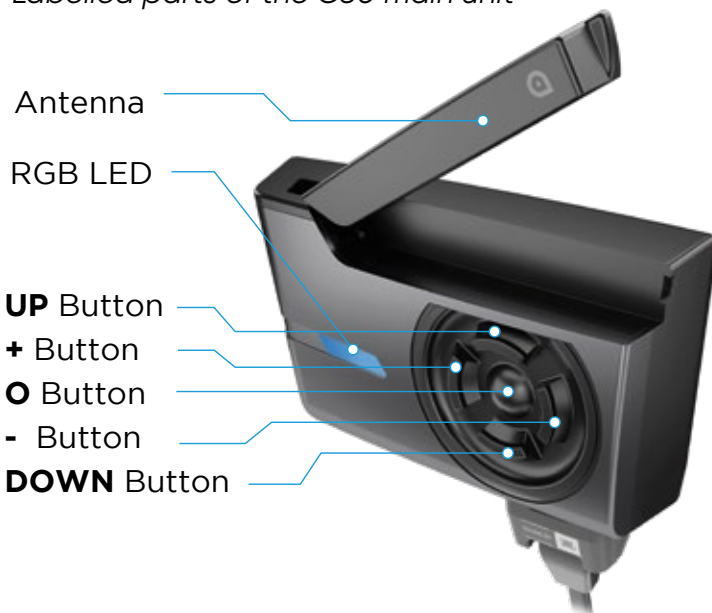
Quick Start Guide

C30



1. Getting familiar with the Unit

Labelled parts of the C30 main unit



Mount Slot



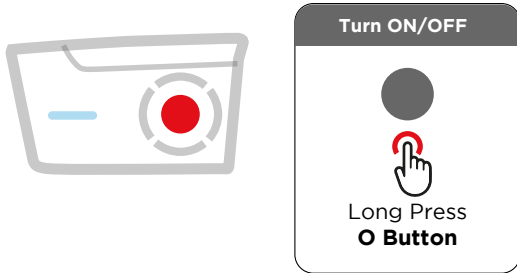
TYPE C
USB Charging
port

MicroUSB
Headset port



2. Test it

- (A) Connect the headset to the unit
- (B) To turn ON the device
Long Press on the **O** button



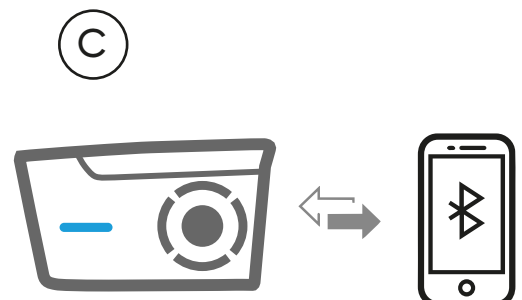
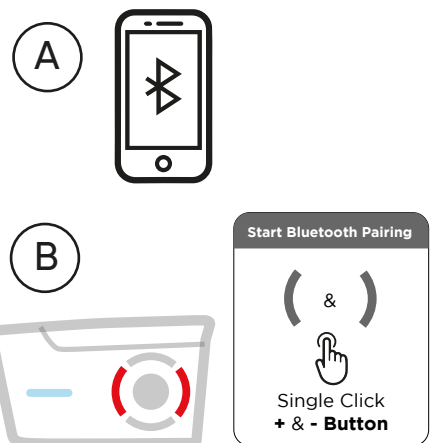
- (Speaker icon) You will be able to listen to the bootup sequence and the bootup test, followed by a battery level announcement



3. Pairing with mobile phone

- (A) This can be done via the Bluetooth settings of your phone.
- (B) To enable the Bluetooth pairing mode on the C30 Device,
Single Click on the **+ and - buttons**
- (C) Complete bluetooth pairing.

Once the unit is paired with your phone, follow the steps in the "install the app" section... (PTO)





4. Install the app

Currently Android version is available

To install the app, Scan the QR code.

- 1. Download to phone and install the .apk file*
- 2. The app is safe, so please follow all the steps and give the necessary permissions*
- 3. Open the app and wait for it to connect to C30*



SCAN QR

You are now ready to use the unit, install the device to your helmet next.

5. Install the unit on your helmet

Install the headset kit and the unit on your helmet.

Scan QR code to watch the installation steps.

